

***DUO-FAST***®

**PNEUMATIC CNP50.1  
COIL NAILER  
D40010**



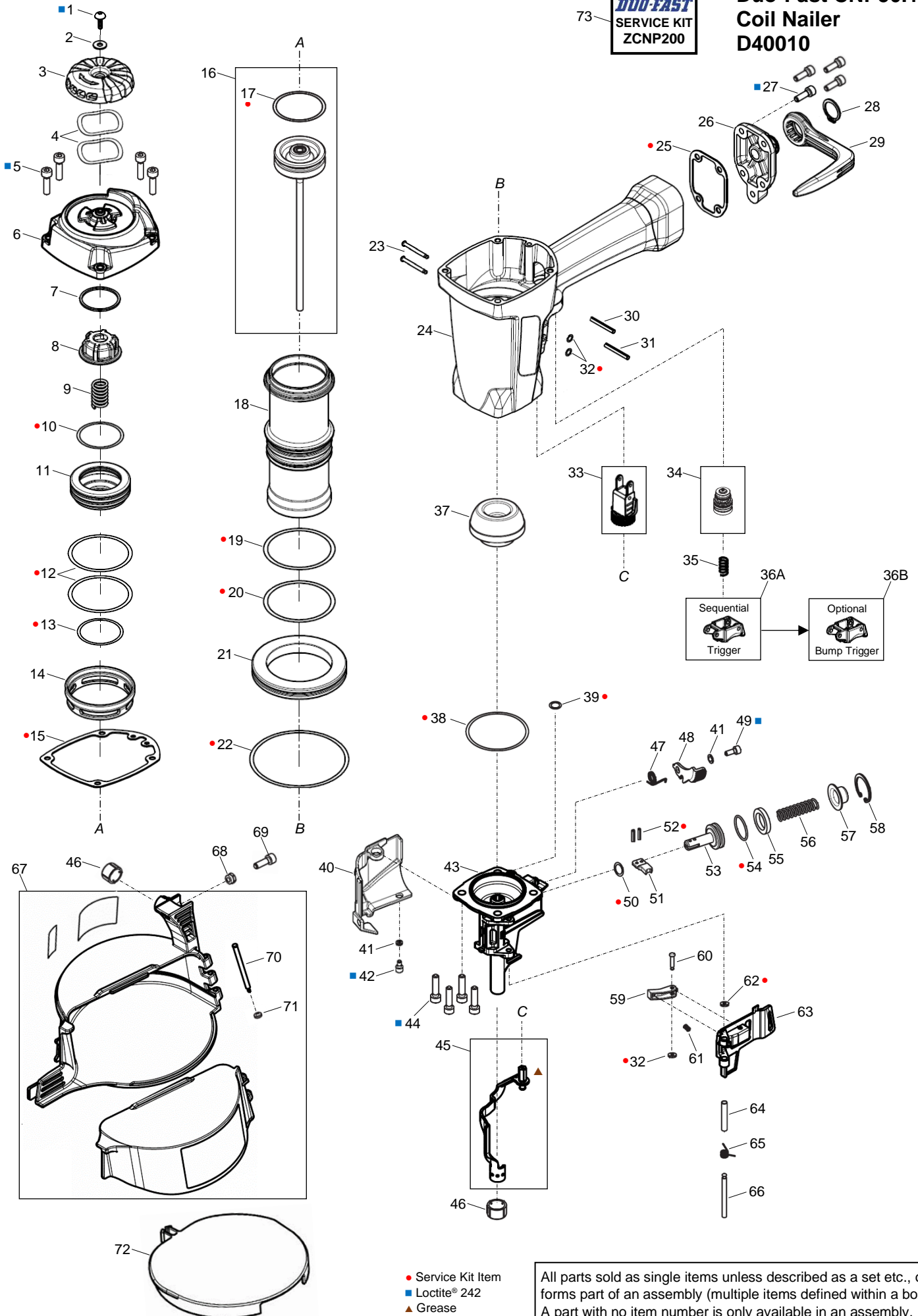
---

**ILLUSTRATED PARTS LIST**

---

73 **DUO-FAST**  
SERVICE KIT  
ZCNP200

# Duo-Fast CNP50.1 Coil Nailer D40010



- Service Kit Item
- Loctite® 242
- ▲ Grease

All parts sold as single items unless described as a set etc., or forms part of an assembly (multiple items defined within a box). A part with no item number is only available in an assembly.

## PARTS LEGEND

## DUO-FAST CNP50.1 COIL NAILER

D40010

■	1	720478	1 Screw UH	*	37	720418	1 Bumper
	2	721058	1 Washer, Flat	*●	38	720471	1 O-Ring
	3	720408	1 Cover, Exhaust	*●	39	919017	1 O-Ring (RPLS 720461) →
	4	720482	2 Washer, Wave		40	720509	1 Cover, Nose
■	5	720484	4 Screw SHC		41	720044	2 Washer, Flat
	6	720500	1 Cap	■	42	721034	1 Screw SHC
	7	720417	1 Spacer		43	720510	1 Nose
	8	720412	1 Stop, Piston	■	44	720511	4 Screw SHC SEMS
	9	720410	1 Spring		45	720507	1 Probe & DoD Shaft Assembly
*●	10	720465	1 O-Ring	*	46	721145	2 No Mar Tip
	11	720411	1 Piston, Main Valve	→	47	503244	1 Spring, Latch (RPLS 721170)
*●	12	720469	2 O-Ring	→	48	503213	1 Latch (RPLS 721171)
*●	13	720467	1 O-Ring	■	49	721172	1 Screw SHC
	14	720413	1 Collar	*●	50	721176	1 O-Ring
*●	15	720414	1 Gasket, Cap		51	721163	1 Pawl, Feed
*	16	720501	1 Driver & Piston Assembly	●	52	721162	2 Pin, Roll
*●	17	720466	1 O-Ring, Piston		53	720512	1 Piston, Feed
	18	720502	1 Cylinder	*●	54	503242	1 O-Ring (RPLS 721165) →
*●	19	720468	1 O-Ring		55	721166	1 Bumper Stop, Feed Piston
*●	20	720470	1 O-Ring	→	56	38303202	1 Spring (RPLS 721167) →
	21	720416	1 Bulkhead		57	721168	1 Collar, Spring
*●	22	720472	1 O-Ring		58	721169	1 Circlip
	23	720427	2 Pin, Step		59	721148	1 Tensioner
	24	720503	1 Body Housing		60	721147	1 Pin, Step
*●	25	720424	1 Gasket, Air Inlet Cap		61	721149	1 Spring, Tensioner
	26	720504	1 Cap, Inlet (Black)	*●	62	502989	1 Ring, PU Retaining (RPLS 721143) →
	27	720458	4 Screw SHC		63	720508	1 Gate
	28	720453	1 Circlip	→	64	503202	1 Sleeve, Gate Hinge (RPLS 721151)
	29	720426	1 Hook, Belt	→	65	502999	1 Spring, Gate (RPLS 721152)
	30	720474	1 Pin, Roll (Short)	→	66	503203	1 Pin, Gate Hinge (RPLS 721153)
	31	720475	1 Pin, Roll (Long)		67	720505	1 Magazine Assembly
*●	32	OR01919N	3 O-Ring (RPLS 721020) →		68	721053	1 Nut, Nyloc
	33	720422	1 Depth of Drive Assembly		69	721052	1 Screw SHC
*●	34	41607301A	1 Trigger Valve Assembly (RPLS 720404) →		70	720506	1 Pin, Step
	35	720407	1 Spring, Trigger		71	905597	1 Ring, PU Retaining (RPLS 720224)
	36A	720420	1 Trigger, Sequential Fire (Grey)	→	72	721191	1 Insert, Magazine
	35B	721086	1 Trigger, Bump Fire (Orange) (Optional)	→	73	ZCNP200	AR Service Kit

\* Normal Wear Items

● Included in Service Kit

■ Apply Loctite® 242 (Blue)

→ New Change

AR As Required

Blue PNs - New Zealand limited parts availability

Accessories supplied in carry bag\*

1 x 30ml Oil

1 x Bump Trigger (Orange) PN 721086

1 x 3mm Hex Key

1 x 4mm Hex Key

1 x 5mm Hex Key

1 x Safety Glasses

\*Carry bag non-procurable

Tool supplied with 1/4 NTP Nitto® style air adaptor (installed)



Use eye protection when cleaning tools.

Use eye and ear protection when operating/testing tools.

Use degreaser in a well ventilated area

Use only approved Paslode Compressor Tool Oil PN F27625.

Never use mineral based oils.

Oil tool daily with 4 to 6 drops via air inlet connection.

Heavy usage will require more frequent oiling.

Operating air pressure at the tool inlet: 550-760 kpa (80-110 psi)

Never exceed the maximum stated air pressure.

Regularly check the regulator and pressure gauge operation.

A water/oil trap must be installed on the regulator outlet and drained regularly.

Never use bottled air or gases such as oxygen to operate the tool.

**WARNING: All parts must be periodically inspected and replaced if worn or damaged. Failure to comply can affect the tool's operation and present a safety hazard.**

## Change Notes

### Revision 1

Item	Part No.	Item Description	Change	Action/Change Description
*66	720513	Label, Logo LH	Availability	Non-procurable
*67	720514	Label, Logo RH		
*72	720516	Label, Data Plate		
*73	720517	Label, Warning		
32	721020	O-Ring	Format	Replaced by OR01919N (Superceded)
34	720404	Trigger Valve Assembly		Replaced by 41607301A (Superceded)
39	720461	O-Ring		Replaced by 919017 (Superceded)
47	721170	Spring		Replaced by 503244 (Superceded)
48	721171	Latch		Replaced by 503213 (Superceded)
62	721143	PU Retaining Ring		Replaced by 502989 (Superceded)
64	721151	Gate Hinge Sleeve		Replaced by 503202 (Superceded)
65	721152	Gate Spring		Replaced by 502999 (Superceded)
66	721153	Gate Hinge Pin		Replaced by 503203 (Superceded)
71	720224	PU Retaining Ring		Replaced by 905597 (Superceded)
72	721191	Magazine Insert		Availability
N/A	Various	Assemblies/Flag Notes	Schematic	Complete layout re-design & re-numbering for clarity. Defined available assemblies Added Service Kit & Kit item flags Added Loctite® flags
		Parts/Notes	Parts Legend	Adopted conventional naming Updated Loctite® and item usage Added Service Kit & Kit item flags

\*Item numbering per previous revision