



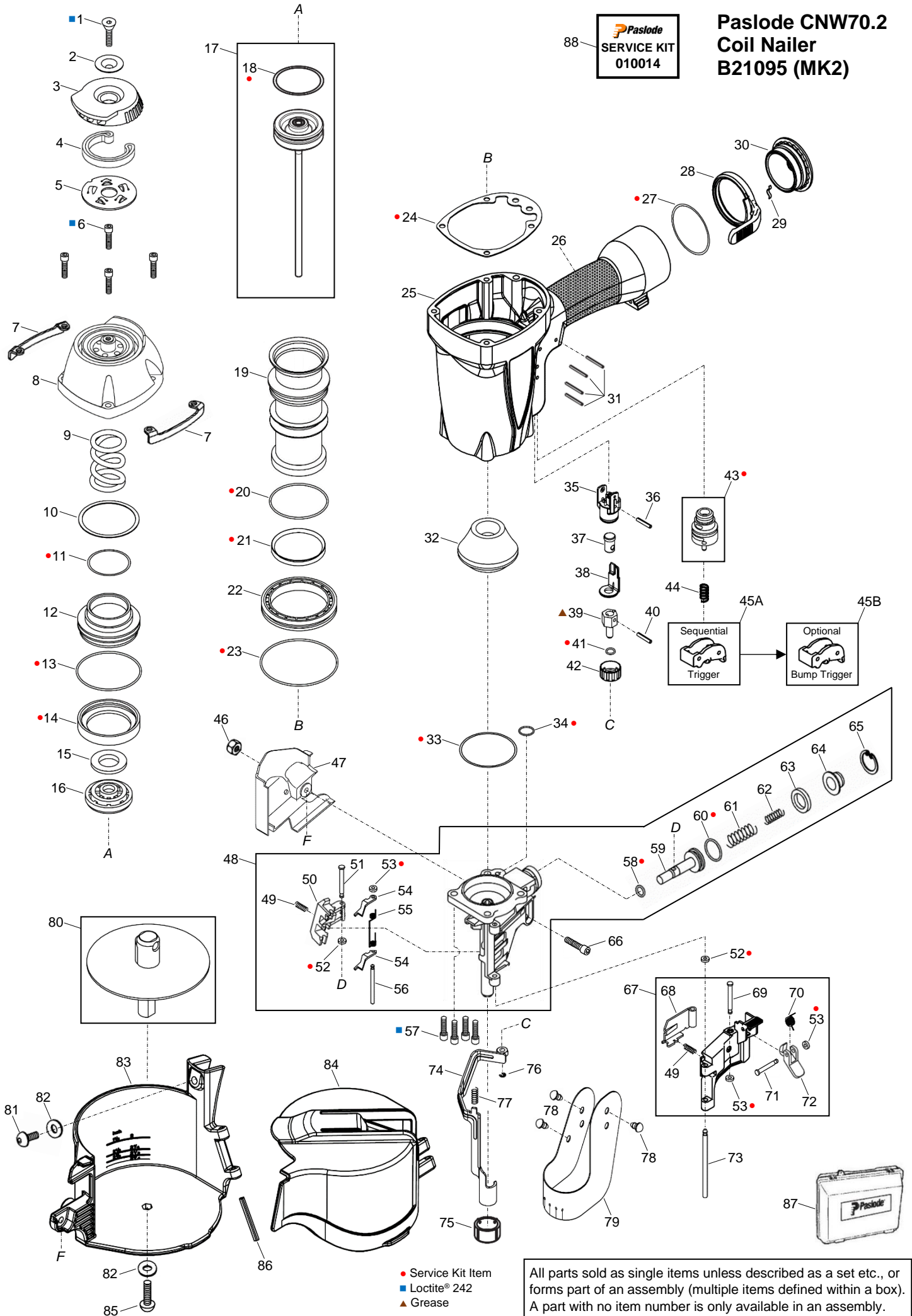
**PNEUMATIC CNW70.2
COIL NAILER
B21095 (MK2)**



ILLUSTRATED PARTS LIST

Paslode
SERVICE KIT
010014

Paslode CNW70.2 Coil Nailer B21095 (MK2)



- Service Kit Item
- Loctite® 242
- ▲ Grease

All parts sold as single items unless described as a set etc., or forms part of an assembly (multiple items defined within a box). A part with no item number is only available in an assembly.

PARTS LEGEND

PASLODE CNW70.2 COIL NAILER

B21095 MK2

■	1	613001	1	Screw FH M6 X 20	45B	613096	1	Trigger Assy, Bump Fire (Orange)	
	2	613002	1	Bracket, Front	46	613207	1	Nut, Lock M5	
	3	613003	1	Cover, Exhaust	47	613062	1	Cover, Nose	
	4	613004	1	Filter, Exhaust	→	48	613226	1	Nose Assembly (RPLS 613200)
	5	613005	1	Plate, Exhaust Filter	49	613045	2	Spring	
■	6	623149	4	Screw SHC	50	613046	1	Pawl, Feed	
	7	613006	2	Protector	51	613044	1	Pin, Step	
	8	613007	1	Cap	*●	52	613034	2	Ring, PU Retaining (Large)
	9	613008	1	Spring	*●	53	613047	3	Ring, PU Retaining (Small)
	10	613009	1	Washer		54	613048	2	Pawl, Check
*●	11	613010	1	O-Ring		55	613049	1	Spring
	12	613011	1	Piston, Main Valve		56	613050	1	Pin, Step
*●	13	613012	1	O-Ring	■	57	405312	4	Screw SHC
*●	14	613013	1	Seal, Cylinder	*●	58	613036	1	O-Ring
	15	613014	1	Washer		59	613037	1	Piston, Feed
	16	613015	1	Stopper, Piston	*●	60	613038	1	O-Ring
*	17	613017	1	Driver & Piston Assy		61	613039	1	Spring
*●	18	613016	1	O-Ring, Piston		62	613040	1	Spring
	19	613018	1	Cylinder		63	613041	1	Bumper, Feed Piston
*●	20	613019	1	O-Ring		64	613042	1	Collar, Spring
*●	21	613020	1	Check Band		65	613043	1	Circlip
	22	613021	1	Bulkhead		66	166063	1	Screw SHC
*●	23	613022	1	O-Ring		67	613205	1	Gate Assembly
*●	24	613023	1	Gasket		68	613074	1	Tensioner/Ratchet
	25	613024	1	Body		69	613073	1	Pin, Step (Long)
	26	613028	1	Grip, Rubber		70	613220	1	Spring
*●	27	613029	1	O-Ring		71	613219	1	Pin, Step (Short)
	28	613224	1	Hook, Belt		72	613221	1	Latch
	29	613225	1	Detent Plate, Belt Hook		73	613033	1	Pin, Step
	30	613218	1	Cap, Air Inlet		74	613210	1	Probe
	31	613031	4	Pin, Roll		75	613228	1	No Mar Tip
*	32	613026	1	Bumper	*●	76	613202	1	E-Ring
*●	33	613027	1	O-Ring		77	613060	1	Spring
*●	34	613025	1	O-Ring		78	613064	3	Insert, Cover Retaining
	35	613214	1	Body, Depth of Drive/Trip Guide		79	613063	1	Cover, Debris
	36	400828	1	Pin, Roll (Long)		80	613065	1	Adjustment Assy, Nail Coalition
	37	613215	1	Shaft, DoD/Trip		81	615942	1	Screw UH
	38	613216	1	Plate, Trip Contact		82	070545	2	Washer, Flat
	39	613211	1	Bolt, DoD Adjustment		83	613206	1	Magazine
	40	613222	1	Pin, Roll (Short)		84	613208	1	Door, Magazine
*●	41	613217	1	O-Ring		85	613071	1	Screw UH
	42	613223	1	Wheel, DoD Adjustment		86	613139	1	Pin, Roll
*●	43	613124	1	Valve Assy, Trigger		87	613272	1	Carry Case
	44	613212	1	Spring		88	010014	AR	Service Kit
	45A	613095	1	Trigger Assy, Sequential (Grey)					

- * Normal Wear Items
 - Included in Service Kit
 - Apply Loctite® 242 (Blue)
 - New Change
- AR As Required

Accessories supplied in carry case

- 1 x 30ml Oil
- 1 x Bump Trigger (Orange)
- 1 x No Mar Tip
- 1 x 3mm Hex Key
- 1 x 4mm Hex Key
- 1 x 5mm Hex Key
- 1 x Safety Glasses

Tool supplied with 1/4 NTP Nitto® style air adaptor (installed)



- Use eye protection when cleaning tools.**
- Use eye and ear protection when operating/testing tools.**
- Use degreaser in a well ventilated area**

Use only approved Paslode Compressor Tool Oil PN F27625.
Never use mineral based oils.
Oil tool daily with 4 to 6 drops via air inlet connection.
Heavy usage will require more frequent oiling.

Operating air pressure at the tool inlet: 480-760 kpa (70-110 psi)
Never exceed the maximum stated air pressure.
Regularly check the regulator and pressure gauge operation.

A water/oil trap must be installed on the regulator outlet and drained regularly.

Never use bottled air or gases such as oxygen to operate the tool.



WARNING: All parts must be periodically inspected and replaced if worn or damaged.
Failure to comply can affect the tool's operation and present a safety hazard.

Change Notes

Revision 0

Item	Part No.	Item Description	Change	Action/Change Description
N/A	613000	Cap Assembly	Availability	Non-procurable
48	613226	Nose Assembly		Non-procurable (procurable per R2)

Revision 1

Item	Part No.	Item Description	Change	Action/Change Description
N/A	Various	Assemblies/Flag Notes	Schematic	Added Service Kit & Kit item flags Added Loctite® flags Corrected Trigger item numbering
N/A	Various	Parts/Notes	Parts Legend	Adopted conventional naming Added Service Kit & Kit item flags Corrected Trigger item numbering Added Carry Case Added missing No Mar Tip Added Loctite® and item usage

Revision 2

Item	Part No.	Item Description	Change	Action/Change Description
30*	613200	Nose	Availability	Replaced by 48, Nose Assembly 613226
53A*	613066	Nail Coalition Support		POA ¹ 80, Nail Coalition Adjustment Assy, 613065
54*	613067	Spring		
55*	613068	Set Shaft		
56A*	613069	Slide Rod		
N/A	Various	Assemblies/Flag Notes	Schematic	Complete layout re-design & re-numbering for clarity. Defined available assemblies
N/A	Various	Parts/Notes	Parts Legend	re-numbered for clarity

¹ Purchase on Assembly

*Item numbering per previous revision