



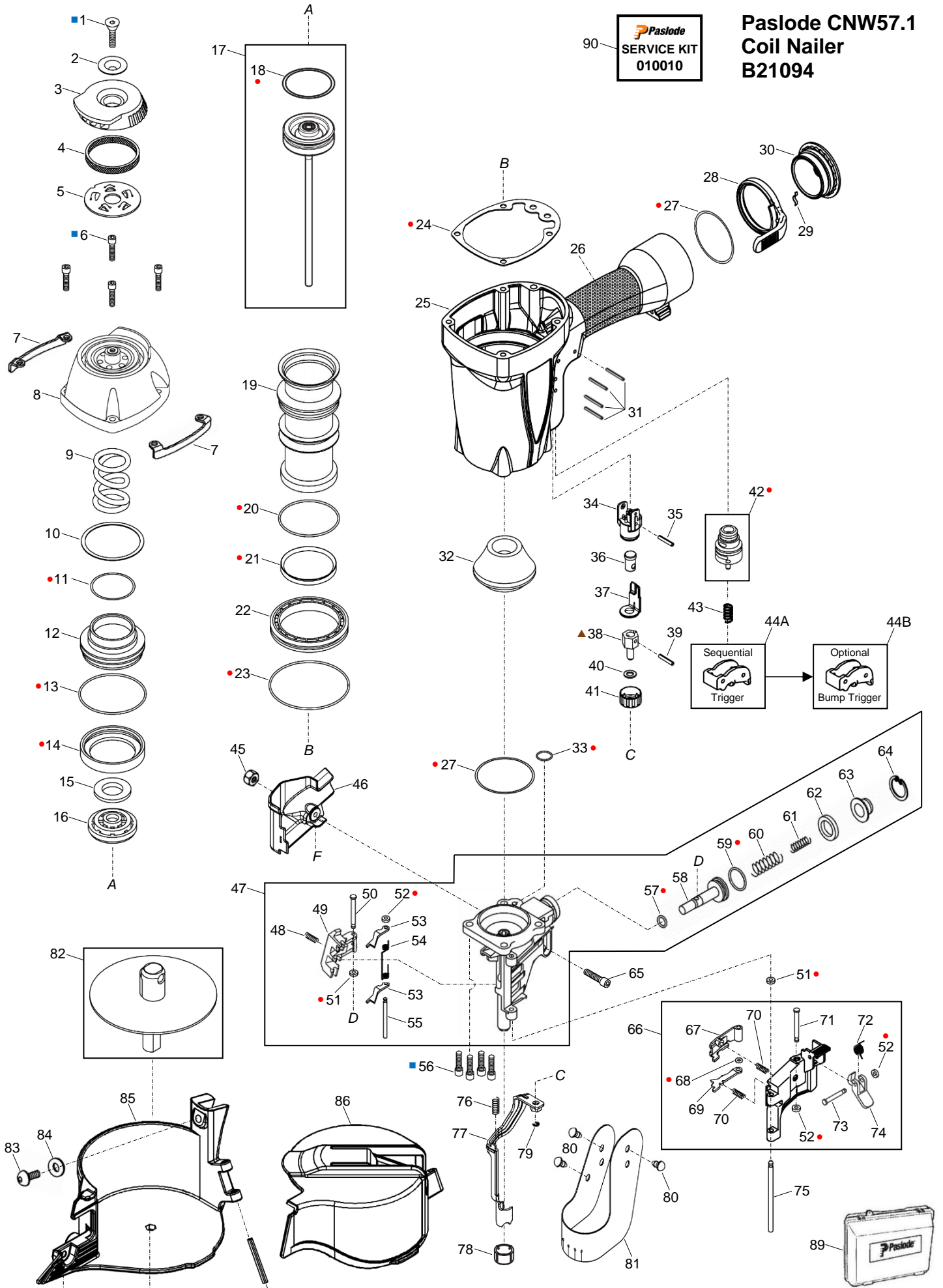
**PNEUMATIC CNW57.1
COIL NAILER
B21094**



ILLUSTRATED PARTS LIST

Paslode
SERVICE KIT
010010

Paslode CNW57.1 Coil Nailer B21094



- Service Kit Item
- Loctite® 242
- ▲ Grease

All parts sold as single items unless described as a set etc., or forms part of an assembly (multiple items defined within a box). A part with no item number is only available in an assembly.

PARTS LEGEND

PASLODE CNW57.1 COIL NAILER

B21094

■	1	613001	1	Screw FH M6 X 20	46	613262	1	Cover, Nose	
	2	613002	1	Washer	→	47	613440	1	Nose Assembly (RPLS 613248)
	3	613415	1	Cover, Exhaust		48	613045	1	Spring
	4	613004	1	Filter, Exhaust		49	613253	1	Pawl, Feed
	5	613407	1	Plate, Exhaust Filter		50	613044	1	Pin, Step
■	6	613436	4	Screw SHC	*●	51	613034	2	Ring, PU Retaining (Large)
	7	613265	2	Protector	*●	52	613047	3	Ring, PU Retaining (Small)
	8	613240	1	Cap		53	613251	2	Pawl, Check
	9	613241	1	Spring		54	613049	1	Spring
	10	613009	1	Washer		55	613050	1	Pin, Step
*●	11	613010	1	O-Ring	■	56	613249	4	Screw SHC
	12	613011	1	Piston, Main Valve	*●	57	613036	1	O-Ring
*●	13	613012	1	O-Ring		58	613037	1	Piston, Feed
*●	14	613013	1	Seal, Cylinder	*●	59	613038	1	O-Ring
	15	613014	1	Washer		60	613039	1	Spring
	16	613015	1	Stopper, Piston		61	613040	1	Spring
*	17	613242	1	Driver & Piston Assy		62	613254	1	Bumper, Feed Piston
*●	18	613428	1	O-Ring		63	613042	1	Collar, Spring
	19	613243	1	Cylinder		64	613043	1	Circlip
*●	20	613429	1	O-Ring		65	166063	1	Bolt SHC
*●	21	613244	1	Check Band		66	613442	1	Gate Assembly (RPLS 613257)
	22	613245	1	Bulkhead		67	613256	1	Tensioner/Ratchet
*●	23	613430	1	O-Ring	*●	68	613441	1	O-Ring →
*●	24	613417	1	Gasket		69	613263	1	Pawl, Check
	25	613246	1	Body		70	613266	2	Spring
	26	613028	1	Grip, Rubber		71	613255	1	Pin, Step
*●	27	613029	2	O-Ring		72	613220	1	Spring
	28	613224	1	Hook, Belt		73	613219	1	Pin, Step
	29	613225	1	Detent Plate, Belt Hook		74	613221	1	Latch
	30	613218	1	Cap, Air Inlet		75	613250	1	Pin, Step
	31	613031	4	Pin, Roll		76	613060	1	Spring
*	32	613247	1	Bumper		77	613260	1	Probe
*●	33	613264	1	O-Ring	*	78	613267	1	No Mar Tip
	34	613214	1	Body, Depth of Drive/Trip Guide	*●	79	613202	1	E-Ring
	35	400828	1	Pin, Roll (Long)		80	613064	3	Insert, Cover Retaining
	36	613215	1	Shaft, DoD/Trip		81	613063	1	Cover, Debris
	37	613216	1	Plate, Trip Contact		82	613268	1	Plate Assy, Nail Support
	38	613261	1	Bolt, DoD Adjustment		83	615942	1	Screw UH
	39	613222	1	Pin, Roll (Short)		84	070545	2	Washer, Flat
→	40	613439	1	Washer PU		85	613258	1	Magazine
	41	613223	1	Wheel, DoD Adjustment		86	613259	1	Door, Magazine
*●	42	613124	1	Valve Assembly, Trigger		87	613071	1	Screw UH
	43	613212	1	Spring		88	613252	1	Pin, Roll
	44A	613095	1	Trigger Assy, Sequential (Grey)	→	89	613272	1	Carry Case (RPLS 613227)
	44B	613096	1	Trigger Assy, Bump Fire (Orange) (Opt)		90	010010	AR	Service Kit
	45	613207	1	Nut, Lock M5					

- * Normal Wear Items
- Included in Service Kit
- Apply Loctite® 242 (Blue)
- New Change
- AR As Required

Accessories supplied in carry case
 1 x 30ml Oil
 1 x Bump Trigger (Orange)
 1 x No Mar Tip
 1 x 3mm Hex Key
 1 x 4mm Hex Key
 1 x 5mm Hex Key
 1 x Safety Glasses



Use eye protection when cleaning tools.
Use eye and ear protection when operating/testing tools.
Use degreaser in a well ventilated area

Use only approved Paslode Compressor Tool Oil PN F27625.
Never use mineral based oils.
Oil tool daily with 4 to 6 drops via air inlet connection.
Heavy usage will require more frequent oiling.

Operating air pressure at the tool inlet: 550-760 kpa (80-110 psi).
Never exceed the maximum stated air pressure.
Regularly check the regulator and pressure gauge operation.

A water/oil trap must be installed on the regulator outlet and drained regularly.

Never use bottled air or gases such as oxygen to operate the tool.



WARNING: All parts must be periodically inspected and replaced if worn or damaged.
Failure to comply can affect the tool's operation and present a safety hazard.

Change Notes

Revision 0

Item	Part No.	Item Description	Change	Action/Change Description
*7A1	A14500702	Cap & Valve Assembly	Availability	Non-procurable
*17	C15701701	Piston		POA ¹ 17, Driver & Piston Assy, 613242
*18	H15701802	Driver		
*30A	613440	Nose Assembly		Introduced Rev 1 (PN missing Rev 0)

Revision 1

Item	Part No.	Item Description	Change	Action/Change Description	
*30	613248	Nose (bare)	Availability	Replaced by 47, Nose Assembly 613440	
*52	613257	Gate		POA ¹ 74, Gate Assembly 613442	
*53A	613066	Support, Nail Coalition		POA 80, Nail Coalition Adjustment Assy, 613065	
*54	613067	Spring			
*55	613068	Set Shaft			
*56A	613069	Slide Rod			
*62	400828	Pin, Roll (x1)			
*117	613271	Pad, Metal			
*110	613269	Label, Logo			Non-procurable
*111	613270	Label, Data Plate			POA 57, Magazine 613258
N/A	613273	Label, Carry Case	Non-procurable		
40	613439	Washer PU	Enhancement	Reduces friction	
47	613440	Nose Assembly	Availability	Part introduced (PNs missing from Rev 0)	
67	613441	O-Ring			
74	613442	Gate Assembly			
89	613227	Carry Case	Availability	Replaced by 613272. CNW57 & CNW72 cases are the same; only labels differ. Labels no longer fitted.	
N/A	Various	Assemblies/Flag Notes	Schematic	Complete layout re-design & re-numbering for clarity. Defined available assemblies	
	Various	Parts/Notes	Parts Legend	Complete layout re-design & re-numbering for clarity. Added missing part numbers	

¹ Purchase on Assembly

*Item numbering per previous revision