



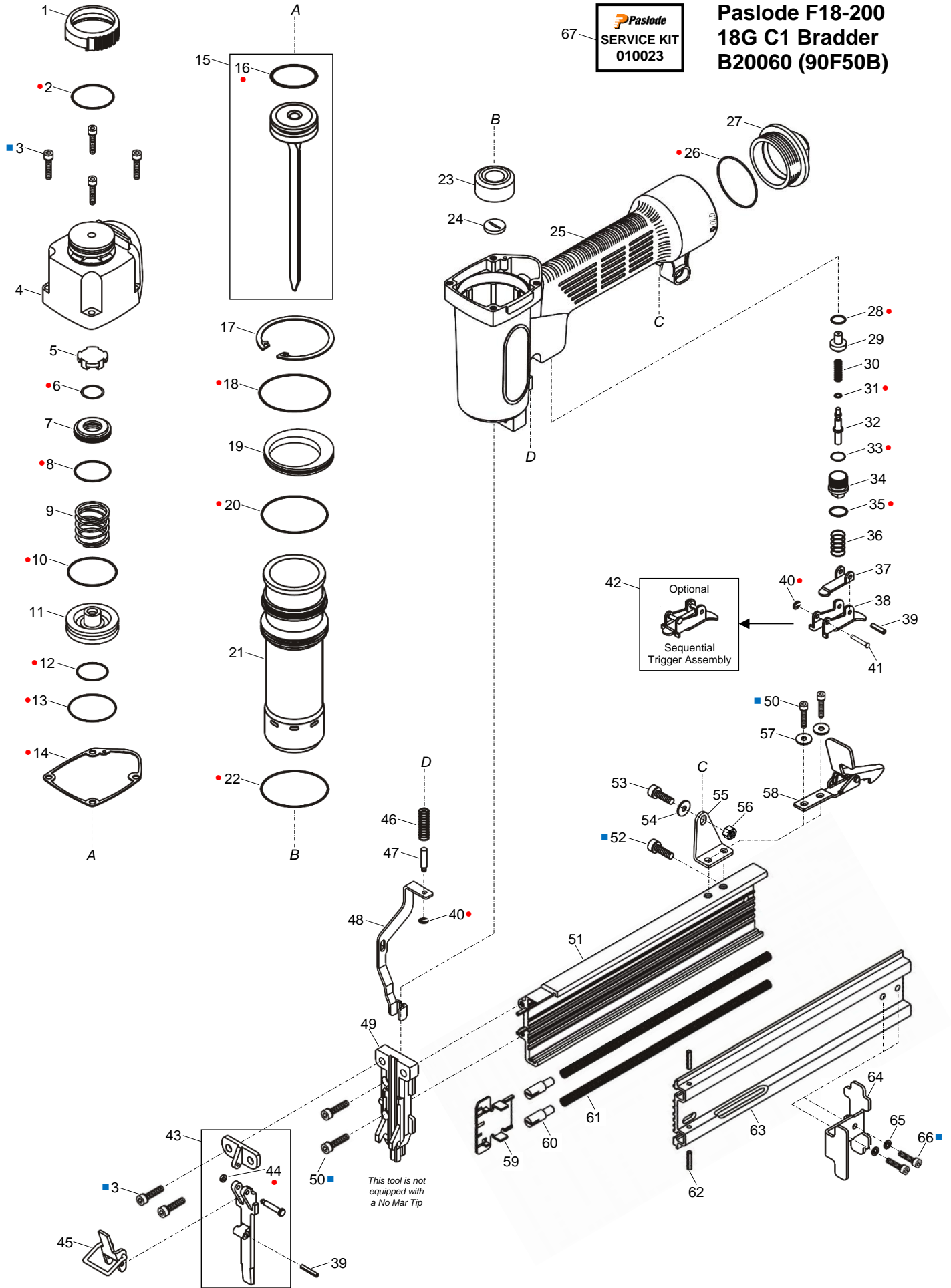
**PNEUMATIC F18-200
18G C1 BRADDER
B20060 (90F50B)**



ILLUSTRATED PARTS LIST

Paslode
SERVICE KIT
010023

Paslode F18-200
18G C1 Bradder
B20060 (90F50B)



This tool is not equipped with a No Mar Tip

- Service Kit Item
- Loctite® 242

All parts sold as single items unless described as a set etc., or forms part of an assembly (multiple items defined within a box). A part with no item number is only available in an assembly.

PARTS LEGEND

PASLODE F18-200 (90F50B) LITELINE C1 BRADDER

B20060

1	WES-18	1 Defector, Exhaust	*● 35	WOR-11	1 O-Ring
*● 2	WOR-61	1 O-Ring	36	WSP-13	1 Spring
■ 3	WM5X20	6 Screw SHC	37	WTG-02	1 Lever, Trip (Bump)
4	WCA-13	1 Cap	38	WTG-01	1 Trigger
5	WES-19	1 Exhaust	39	WSM-03	2 Pin, Roll
*● 6	WOR-01	1 O-Ring	*● 40	WE-25	2 E-Ring (RPLS WE-2.5)
7	WCA-11	1 Guide Piston, Main Valve	41	WSM-04	1 Pin, Step
*● 8	WOR-62	1 O-Ring	→ 42	WTG-70	1 Trigger Assembly, Sequential (Optional)
9	WSP-01	1 Spring	43	WFP-70	1 Plate Assembly, Nose
*● 10	WOR-03	1 O-Ring, Main Valve	● 44	WOR-103	1 O-Ring, Retaining
11	WPV-08	1 Piston, Main Valve	45	WDL-04	1 Latch
*● 12	WOR-04	1 O-Ring, Main Valve Piston Stop	46	WSP-12	1 Spring, Probe
*● 13	WOR-05	1 O-Ring, Cylinder Seal	47	WSM-40	1 Shaft, Probe
*● 14	WWS-30	1 Gasket, Inlet Cap	48	WST-21	1 Probe
* 15	WPS-46	1 Piston & Driver Assembly	49	WP-30	1 Nose
*● 16	WOR-07	1 O-Ring, Piston	■ 50	WM4X12	4 Screw SHC
17	WSP-35	1 Circlip	51	WMZ-44	1 Magazine
*● 18	WOR-63	1 O-Ring, Bulkhead	■ 52	WM5X7	1 Screw SHC (Magazine Stop)
19	WCY-14	1 Bulkhead	53	WM5X18	1 Screw SHC
*● 20	WOR-64	1 O-Ring, Cylinder	54	WWS-01	1 Washer 5mm, Flat
21	WCY-16	1 Cylinder	55	WHR-30	1 Bracket
*● 22	WOR-65	1 O-Ring, Cylinder	56	WM5	1 Nut 5mm, Lock
* 23	WBP-01	1 Bumper	→ 57	WWS-07	2 Washer 4mm, Flat
24	WSW-02	1 Seal, Driver	58	WFC-33	1 Latch, Magazine
25	WBD-22	1 Body Housing	59	WFD-30	1 Pusher
*● 26	WOR-55	1 O-Ring, Inlet Cap	60	WES-20	1 Guide, Pusher & Spring
27	WCA-12	1 Cap, Inlet	61	WSP-40	1 Spring, Pusher
*● 28	WOR-09	1 O-Ring	62	WSM-07	1 Pin, Roll
29	WVS-28	1 Housing, Inner Trigger Valve	63	WMC-08	1 Cover, Magazine
30	WSP-34	1 Spring	64	WFC-32	1 Cover, Magazine End
*● 31	WOR-10	1 O-Ring, Spool Valve	65	WWS-02	2 Washer 4mm, Spring
32	WVS-29	1 Spool Valve, Trigger Valve	■ 66	WM4X8	2 Screw SHC
*● 33	WOR-20	1 O-Ring	→ 67	010023	AR Service Kit
34	WVS-27	1 Housing, Outer Trigger Valve			

- * Normal Wear Items
 - Included in Service Kit
 - Apply Loctite® 242 (Blue)
 - New Change
- AR As Required

Accessories supplied in carry case*

- 1 x 30ml Oil
- 1 x 3mm Hex Key
- 1 x 4mm Hex Key
- 1 x Safety Glasses

*Carry case non-procurable

Tool supplied with 1/4 NTP Hansen® style air adaptor (installed)
Refer item (42) for Optional Sequential Trigger Assembly



- Use eye protection when cleaning tools.
- Use eye and ear protection when operating/testing tools.
- Use degreaser in a well ventilated area

Use only approved Paslode Compressor Tool Oil PN F27625.
Never use mineral based oils.
Oil tool daily with 2 to 4 drops via air inlet connection.
Heavy usage will require more frequent oiling.

Operating air pressure at the tool inlet: 550-690 kpa (80-100 psi).
Never exceed the maximum stated air pressure.
Regularly check the regulator and pressure gauge operation.

A water/oil trap must be installed on the regulator outlet and drained regularly.

Never use bottled air or gases such as oxygen to operate the tool.



**WARNING: All parts must be periodically inspected and replaced if worn or damaged.
Failure to comply can affect the tool's operation and present a safety hazard.**

Change Notes

Revision 0

Item	Part No.	Item Description	Change	Action/Change Description
N/A	Various	M/V Piston Guide Assy	Availability	Non-procurable
		Main Valve Assy		
22*		Piston		POA 15, Piston & Driver Assembly WPS-46
23*		Driver		
31*		Nose Support Plate		
32*		Nose Plate		POA 43, Nose Plate Assembly WFP-70

¹ Purchase on Assembly

*Item numbering per previous revision

Revision 1

Item	Part No.	Item Description	Change	Action/Change Description
33*	WM5X20	Screw SHC	Format	Duplicate item. Deleted 33* & updated item 4* quantity
39*	WE-2.5	E-Ring		Duplicate item. Deleted 39* & updated item 27* quantity
51*	WSM-03	Pin		Duplicate item. Deleted 51* & updated item 36* quantity
63*	WWS-01	Spring Washer		Duplicate item. Deleted 63* & updated item 57* quantity
60*	WWS-02	Spring Washer (4mm)		Duplicate item. Deleted 71* & updated item 60* quantity
76*	WM4X12	Screw SHC		Duplicate item. Deleted 76* & updated item 61* quantity
N/A	Various	Assemblies/Flag Notes	Schematic	Added Service Kit & Kit item flags Added Loctite® flags
		Parts/Notes	Parts Legend	Separated parts list Adopted conventional naming Added Service Kit & Kit item flags Added Loctite® and item usage

*Item numbering per previous revision

Revision 2

Item	Part No.	Item Description	Change	Action/Change Description
63*	WWS-01	Flat Washer (5mm) (x1)	Format	Deleted. Washer not applicable item 52
60*	WWS-02	Spring Washer (4mm) (x2)	Availability	Incorrect Washer. Introduced 57. Updated item 65 quantity.
57	WWS-07	Flat Washer (4mm) (x2)		
74*	WSM-74	Step Pin		POA 43, Nose Plate Assembly WFP-70
42	WTG-70	Trigger Assy (Seq.)		Introduced Optional Sequential Trigger Assembly
70	010023	Service Kit		Introduced Service Kit
N/A	Various	Assemblies/Flag Notes	Schematic	Complete layout re-design & re-numbering for clarity Defined available ANZ assemblies
		Parts/Notes	Parts Legend	Re-numbered for clarity

¹ Purchase on Assembly

*Item numbering per previous revision