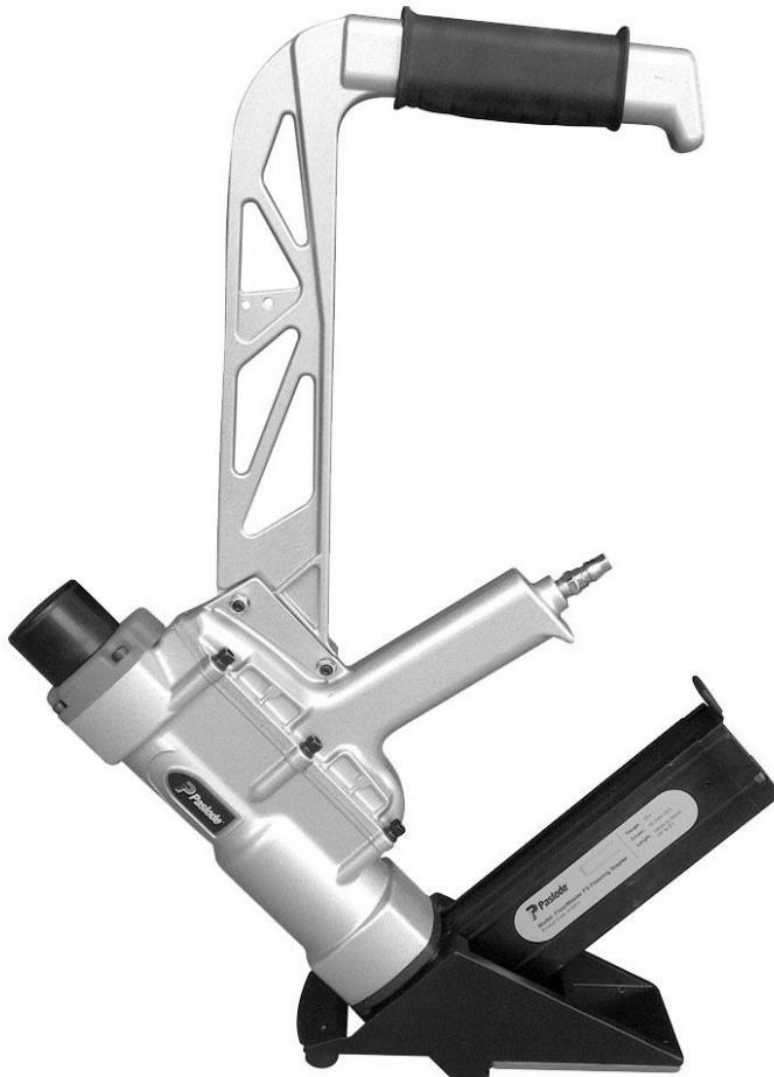




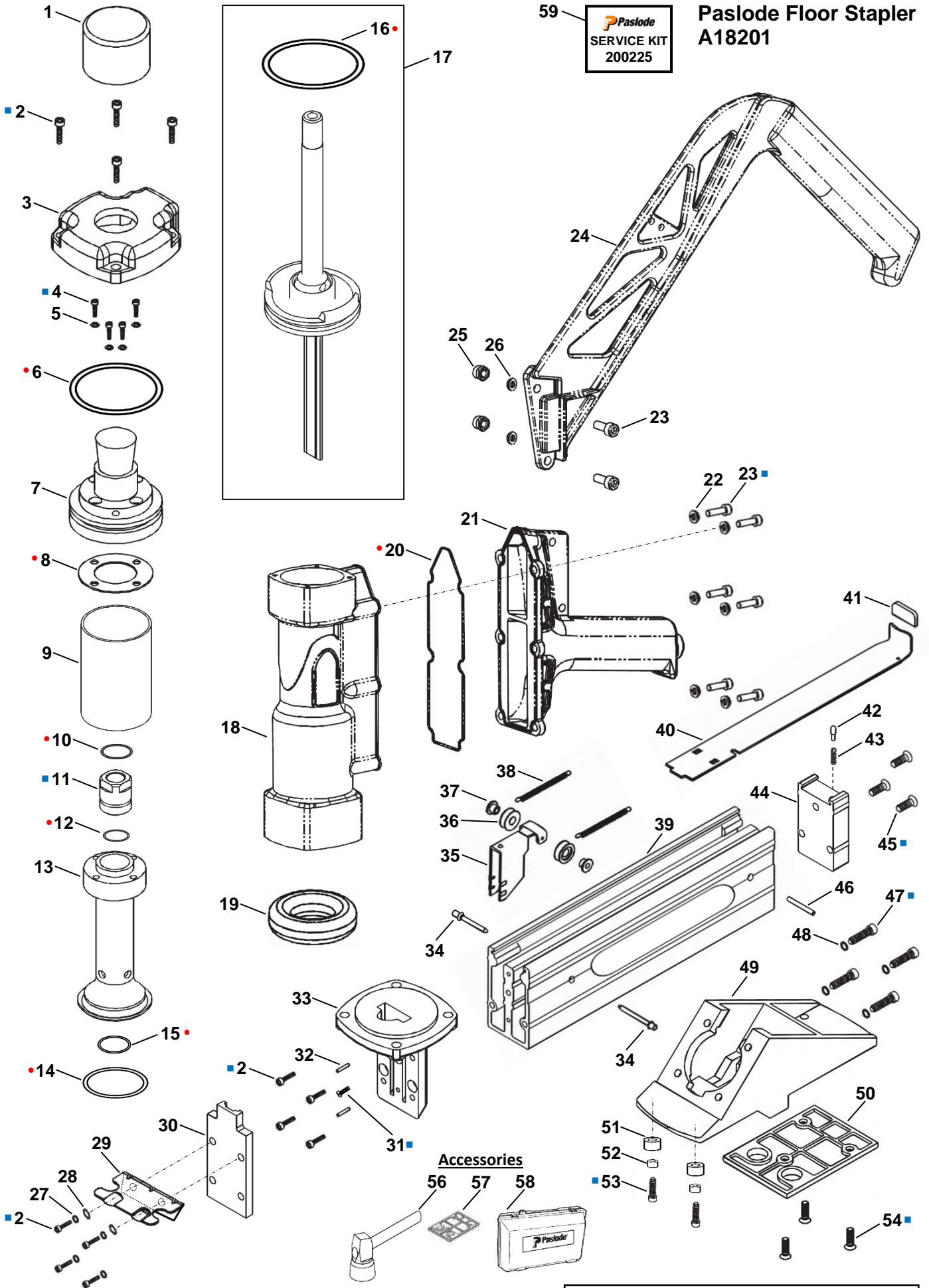
**FLOORMASTER FS
FLOORING STAPLER
A18201**



ILLUSTRATED PARTS LIST

59  **Paslode**
SERVICE KIT
200225

Paslode Floor Stapler A18201



Accessories

56 57 58

• Service Kit Item
■ Loctite® 242

All parts sold as single items unless described as a set etc., or forms part of an assembly (multiple items defined within a box).

PARTS LEGEND

PASLODE FLOORMASTER FS T&G FLOORING STAPLER

A18201

1	200169	1	Buffer, Actuator	32	200185	2	Pin, Roll
■ 2	200170	12	Screw SHC M5 x 16	33	200179	1	Nose
3	200171	1	Cap	34	200192	2	Rivet
■ 4	200172	4	Screw SHC M4 x 20	35	200203	1	Pusher
5	200173	4	Washer, Spring 4mm	36	200202	2	Roller, Spring
* ● 6	200175	1	O-Ring	37	200201	2	Bush, Spring Roller
7	200174	1	Poppet Actuator	38	200204	2	Spring, Pusher
* ● 8	200176	1	Gasket	39	200193	1	Magazine
9	200160	1	Cylinder	40	200199	1	Cover, Magazine
* ● 10	200162	1	O-Ring	41	200200	1	Grip, Magazine Cover
■ 11	200161	1	Nut	42	200198	1	Pin, Lock
* ● 12	200163	1	O-Ring	43	200197	1	Spring, Lock Pin
13	200164	1	Poppet	44	200195	1	End Cap, Magazine
* ● 14	200165	1	O-Ring	■ 45	200196	3	Screw SHC CS M5 x 20
* ● 15	200166	1	O-Ring	46	200194	1	Pin, Roll
* ● 16	200167	1	O-Ring	■ 47	200191	4	Screw SHC M6 x 35
* 17	200168	1	Driver & Piston Assembly	48	200190	4	Washer, Spring 6mm
18	200177	1	Body, Housing	49	200186	1	Shoe
* 19	200178	1	Bumper	50	200188	1	Pad Adaptor (5/16 Standard) (13mm (1/2") T & G)
* ● 20	200205	1	Seal, Air Inlet Housing	51	200219	2	Foot, Rubber
21	200208	1	Housing, Air Inlet	→ 52	200220	2	Bush
22	200206	6	Washer, Spring 6mm	→ 53	200218	2	Screw SHC 6mm
■ 23	200207	8	Screw SHC M6 x 25	→ 54	200189	3	Screw SHC CS M6 x 35
24	200211	1	Handle & Grip Assembly	55	200213	1	Label, Warning
25	200209	2	Nut, Lock M6	56	200212	1	Mallet
26	200210	2	Washer, Flat 6mm	57	200187	1	Pad Adaptor (1/4 Optional) (45mm (25/32") T & G)
27	200183	4	Washer, Spring 5mm	58	200217	1	Carry Case
28	200184	2	Washer, Flat 5mm	→ 59	200225	AR	Service Kit
29	200182	1	Baffle Plate				
30	200181	1	Nose Plate				
■ 31	200180	1	Screw PH/CS				

* Normal Wear Items

● Included in Service Kit

■ Apply Loctite® 242 (Blue)

→ New Change

AR As Required

Accessories supplied in Case

1 x 30ml Oil

1 x Safety Glasses

1 x Mallet

1 x 1/4 Pad Adaptor 200187

3 x Screw 200189 (spares for pad adaptor)

1 x 3mm Hex Key

1 x 4mm Hex Key

1 x 5mm Hex Key

Note: Tool requires 1/4 NTP air adaptor

**Use eye protection when cleaning tools.****Use eye and ear protection when operating/testing tools.****Use only approved Paslode Compressor Tool Oil PN F27625.****Never use mineral based oils.****Oil tool daily with 2 to 4 drops via air inlet connection.****Heavy usage will require more frequent oiling.****Operating air pressure at the tool inlet: 480-620 kpa (70-90 psi).****Never exceed the maximum stated air pressure.****Regularly check the regulator and pressure gauge operation.****A water/oil trap must be installed on the regulator outlet and drained regularly.****Never use bottled air or gases such as oxygen to operate the tool.****WARNING: All parts must be periodically inspected and replaced if worn or damaged.****Failure to comply can affect the tool's operation and present a safety hazard.**

Change Notes

Revision 1

Item	Part No.	Item Description	Change	Action/Change Description
*53	200214	Specification Label	Availability	Non procurable
*54	200215	Logo Label RH		
*55	200216	Logo Label LH		
23	200207	Screw SHC M6 x 25	Correction	Corrected item quantity
51	200219	Rubber Foot	Availability	Added foot items
52	200220	Bush		
53	200218	Screw		
N/A	Various	Assemblies/Flag Notes	Schematic	Complete layout re-design for clarity Defined available assemblies Added Service Kit & Kit item flags Added Accessories Added Loctite® flags
N/A	Various	Parts/Notes	Parts Legend	Added Service Kit & Kit item flags Added Adopted conventional naming Adopted ANZ conventional safety symbols Updated Loctite® and item usage

*Item numbering refers to previous revision