



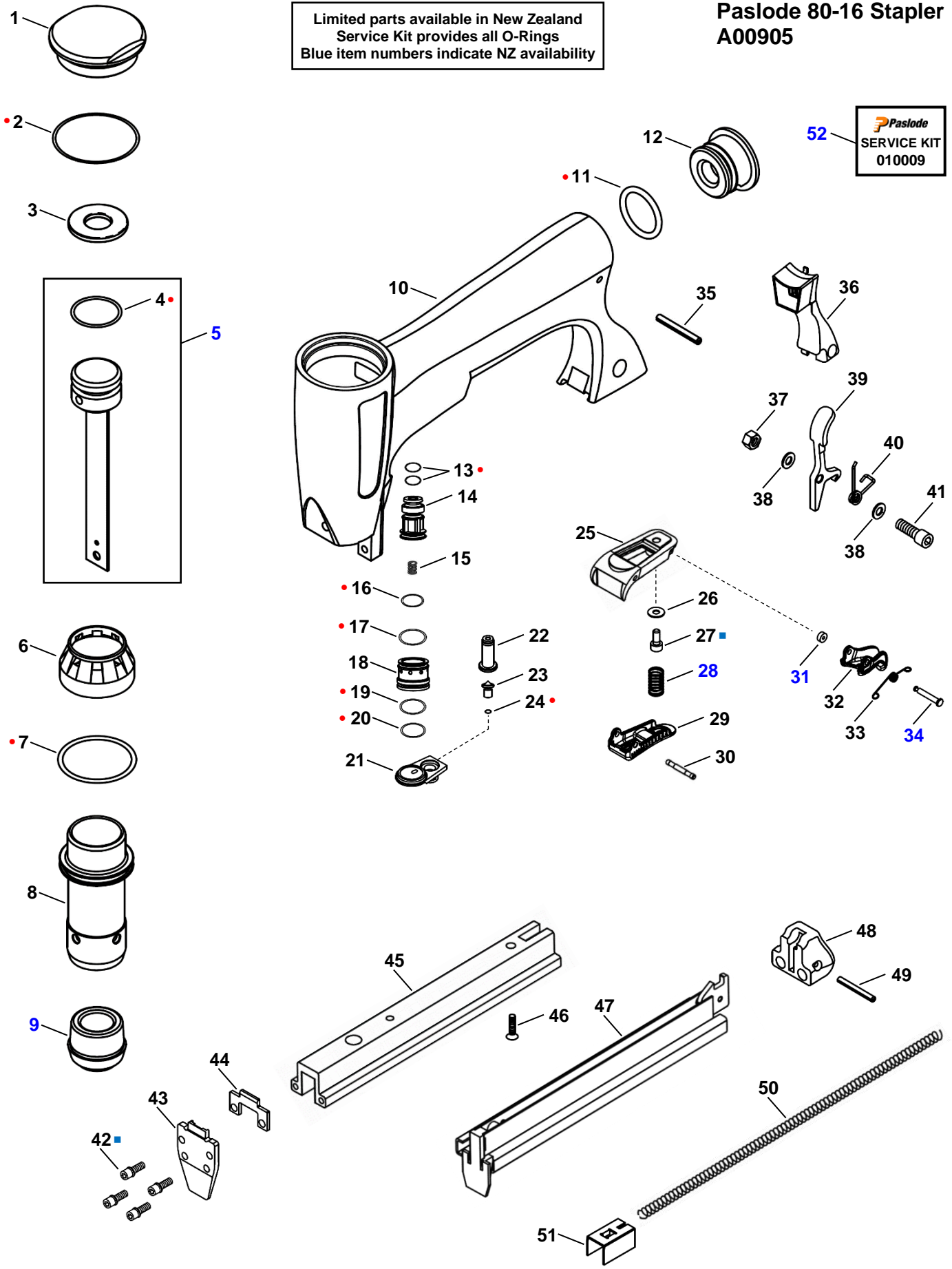
**PNEUMATIC 80-16
STAPLER
A00905**



ILLUSTRATED PARTS LIST

Paslode 80-16 Stapler A00905

Limited parts available in New Zealand
Service Kit provides all O-Rings
Blue item numbers indicate NZ availability



• Service Kit Item
■ Loctite® 242

All parts sold as single items unless described as a set etc., or forms part of an assembly (multiple items defined within a box). ie. A part with no item number is only available in an assembly.

PARTS LEGEND

PASLODE 80-16 STAPLER

A00905

1	720001	1 Cap	27	720028	1 Screw SHC	
*●	2	720002	1 O-Ring	→ 28	905598	1 Spring (RPLS 720047)
	3	720003	1 Stop, Piston	29	720053	1 Trigger (RPLS 720026)
*●	4	720004	1 O-Ring, Piston	30	720027	1 Pin
*	5	720005	1 Driver & Piston Assembly	→ 31	905597	1 Washer PU (RPLS 720048)
	6	720006	1 Collar	32	720049	1 Trigger Assembly
*●	7	720007	1 O-Ring	33	720050	1 Spring
	8	720008	1 Cylinder	→ 34	905596	1 Pin, Step (RPLS 720051)
*	9	720009	1 Bumper	35	720029	1 Pin, Roll
	10	720010	1 Body, Housing	36	720032	1 Cover, Exhaust
*●	11	720030	1 O-Ring	37	720033	1 Nut, Lock
	12	720031	1 Cap, Air Inlet	38	720046	2 Washer, Flat
*●	13	720014	2 O-Ring	39	720035	1 Latch
	14	720015	1 Valve Body, Inner	40	720034	1 Spring, Latch
	15	720045	1 Spring	41	720036	1 Bolt SHC
*●	16	720016	1 O-Ring	■ 42	720013	4 Screw SHC
*●	17	720017	1 O-Ring	43	720012	1 Nose
	18	720018	1 Valve Body, Outer	44	720011	1 Support Plate, Nose
*●	19	720019	1 O-Ring	45	720037	1 Magazine Base
*●	20	720020	1 O-Ring	■ 46	720038	1 Screw FH
	21	720021	1 Cover, Valve	47	720039	1 Magazine Slide
	22	720022	1 Tube, Connecting	48	720041	1 End Cap, Magazine
	23	720024	1 Stem, Trigger Valve	49	720040	1 Pin, Roll
*●	24	720025	1 O-Ring	50	720042	1 Spring, Pusher
	25	720052	1 Base, Trigger (RPLS 720023)	51	720043	1 Pusher
	26	720044	1 Washer, Flat	→ 52	010009	AR Service Kit

* Normal Wear Items

● Included in Service Kit

■ Apply Loctite® 242 (Blue)

→ New Change

AR As Required

Blue PNs - New Zealand limited parts availability

Accessories supplied in box

1 x 30ml Oil

1 x 3mm Hex Key

Tool supplied with 1/4 NTP Nitto® style air adaptor (installed).



Use eye protection when cleaning tools.

Use eye and ear protection when operating/testing tools.

Use degreaser in a well ventilated area

Use only approved Paslode Compressor Tool Oil PN F27625.

Never use mineral based oils.

Oil tool daily with 2 to 4 drops via air inlet connection.

Heavy usage will require more frequent oiling.

Operating air pressure at the tool inlet: 480-690 kpa (70-100 psi).

Never exceed the maximum stated air pressure.

Regularly check the regulator and pressure gauge operation.

A water/oil trap must be installed on the regulator outlet and drained regularly.

Never use bottled air or gases such as oxygen to operate the tool.



WARNING: All parts must be periodically inspected and replaced if worn or damaged.

Failure to comply can affect the tool's operation and present a safety hazard.

Change Notes

Revision 1

Item	Part No.	Item Description	Change	Action/Change Description
25	720023	Trigger Base	Format	Replaced by 720052
28	720026	Trigger		Replaced by 720053

Revision 2

Item	Part No.	Item Description	Change	Action/Change Description
25	720047	Spring	Format	Replaced by 905598
31	720048	Washer PU		Replaced by 905597
34	720051	Pin, Step		Replaced by 905596
N/A	720070	Label, Logo (LH)	Availability	Non procurable
N/A	720071	Label, Logo (RH)		Non procurable
	Various	Assemblies/Flag Notes	Schematic	Complete layout re-design & re-numbering for clarity Defined available ANZ assemblies Added Service Kit & Kit item flags Updated Loctite® flags
	Various	Parts/Notes	Parts Legend	Adopted conventional naming Added Safety data Updated Loctite® and item usage Added Service Kit & Kit item flags